

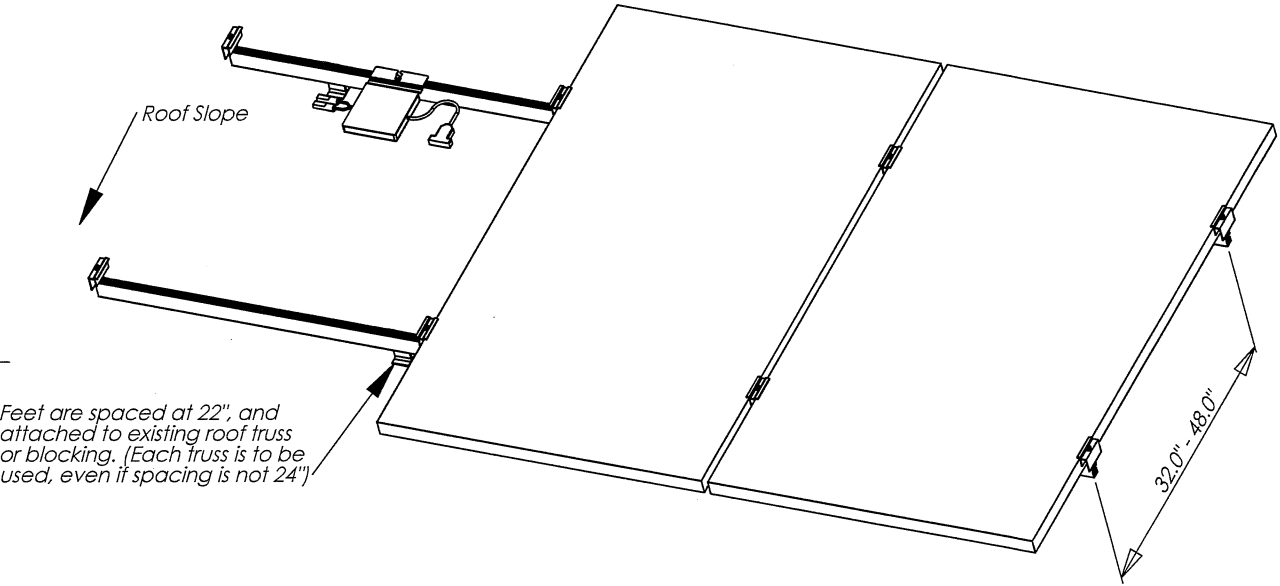
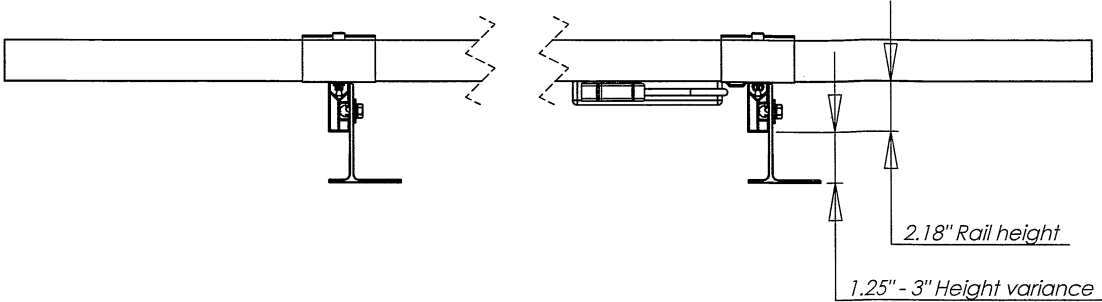
- Notes:
- Weight of a 3 panel assembly: 176 lbs (0.78kN)
 - Point load/weight per foot: 22 lbs/SRM Foot (based on 8 feet per 3 panels)
 - Weight per sqft: 3.2 lbs

Installation Notes:

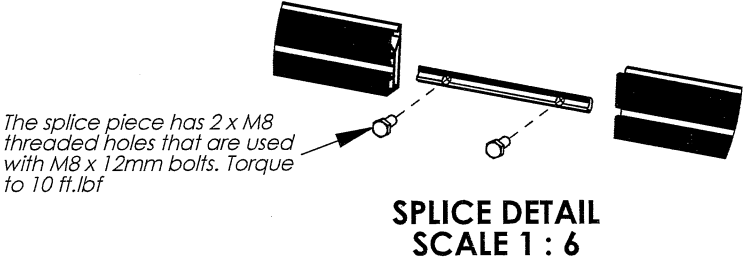
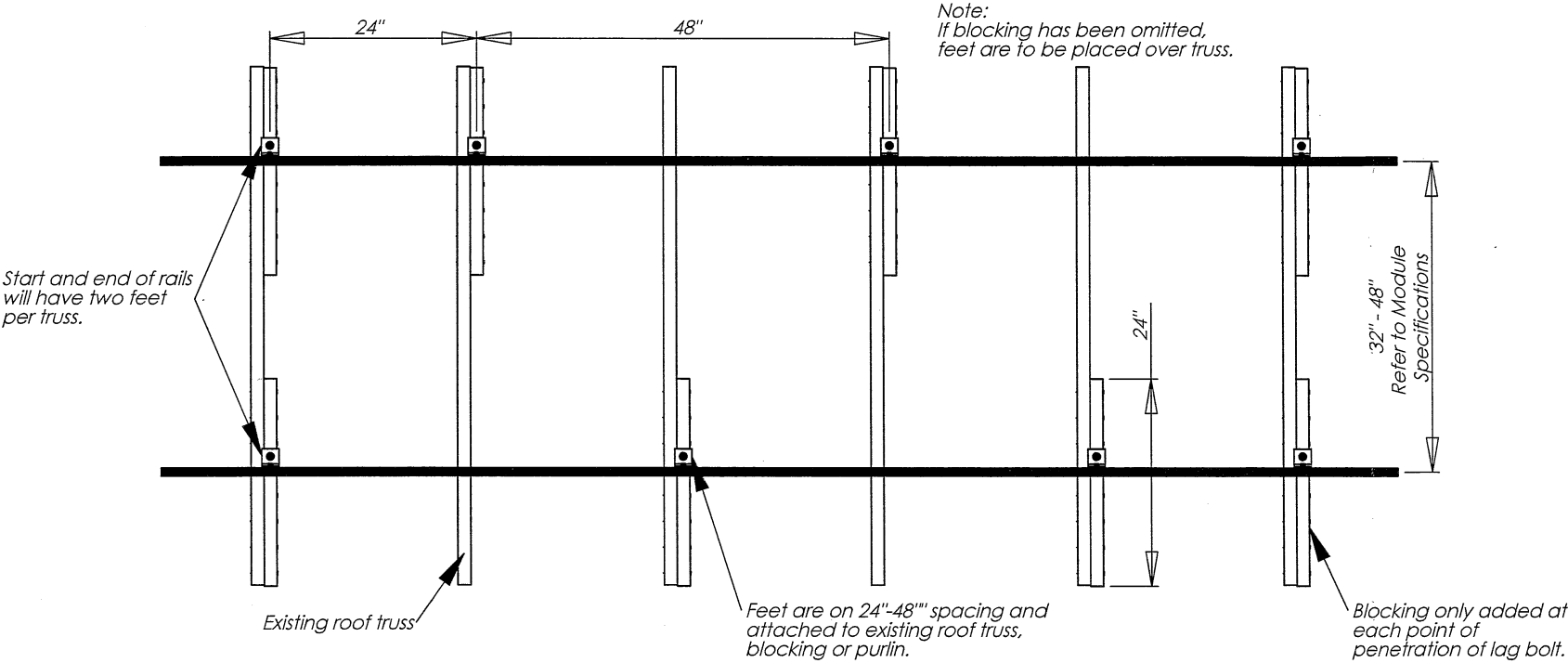
Installer to take all necessary precautions to ensure potential for roof leaks are minimized. Use of an appropriate sealant/adhesive is recommended.

Use washers with rubber seal provided to prevent water ingress through mounting hole in the foot.

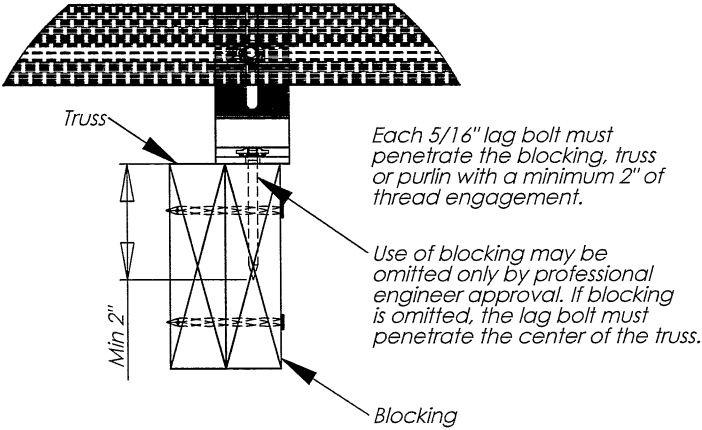
Fastening hardware should be 5/16" lag screws with a length to ensure no less than 2" of thread engagement into truss, blocking or purlin. If blocking is used, it is to match top cord.



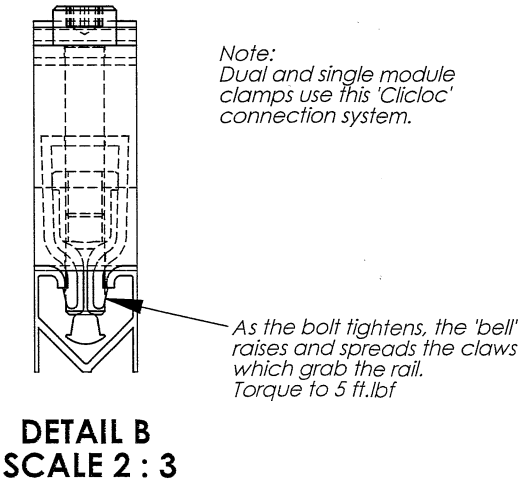
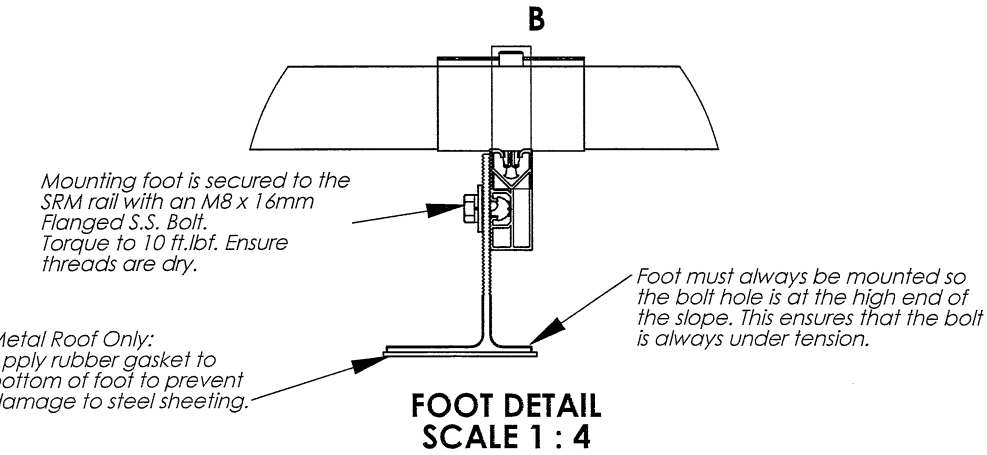
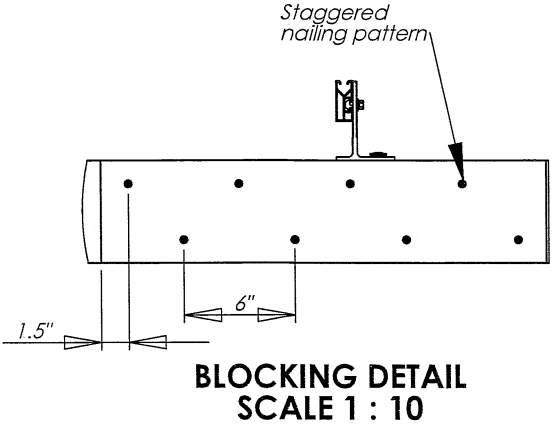
Feet are spaced at 22", and attached to existing roof truss or blocking. (Each truss is to be used, even if spacing is not 24")



Note: There are no washers used with the bolts. The bolts are not meant to be threaded in until the head hits the splice piece. The bottom of the bolt is meant to hit the rail first.



LAG DETAIL SCALE 1 : 5



Design Notes

The structure for the system was designed to provide safe support for the following loads:



- Maximum net uplift per support is 159 lbs (0.71 kN) based on a net suction applied perpendicular to panel surface of 26.5 lbs/sqft (1.27 kPa)
- Maximum vertical design live load applied over horizontal surfaces (rain+snow) is 48 lbs/sqft (2.3 kPa)

It is the owners responsibility to determine if the existing roof structure is capable of accepting the proposed solar panel installation.

Total system weight of 3 panel assembly using 10' rails: 174lbs (0.8kN) based on average uniform load of 3.2 lbs/ft (0.15 kPa)

Module size 1.68 x 0.98 meters, weight 48.4 lbs (22 kgs) 2.71 lbs/sqft (0.17 kPa)

Roof slope to have a minimum pitch of 3/12 and a maximum pitch of 12/12

REVIEWED FOR STRUCTURAL ITEMS BY: Keewatin Group Ltd.		 tel: 905-532-0770 fax: 905-532-0593 520 Applewood Crescent Vaughan ON, L4K 4B4
		www.sentinel solar.com PROPRIETARY AND CONFIDENTIAL THE INFORMATION CONTAINED IN THIS DRAWING IS THE SOLE PROPERTY OF Sentinel Solar. ANY REPRODUCTION IN PART OR AS A WHOLE WITHOUT THE WRITTEN PERMISSION OF Sentinel Solar IS PROHIBITED.
Drawn By CD	DWG. NO. SRM Spyder Assembly 2.5 Staggered Feet for Sloped Roofs	REV 0
PROJECT # 15620	SCALE: 1:20	SHEET 1 OF 1